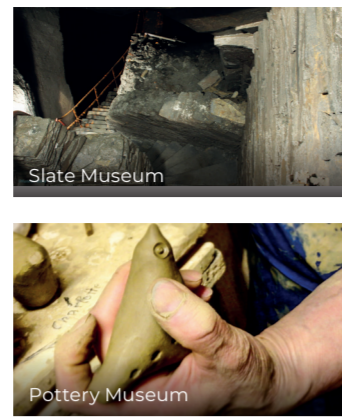




CASTLES

The Guttland is the region of castles and fortresses. Nowhere else in Luxembourg is there such a high concentration of medieval buildings as here. Besides individual fortresses, such as the one in Useldange or Pettingen, the Valley of the Seven Castles is one of the country's main tourist attractions.

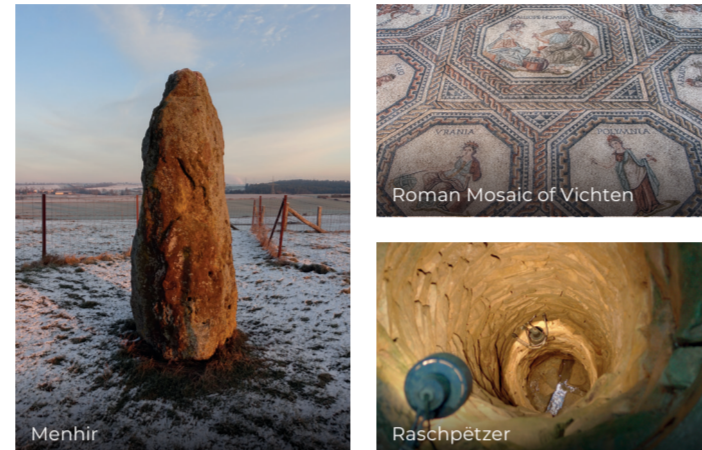
- B2 Ansembourg**
10, Rue de la Vallée
L-7411 Ansembourg
T +352 621 835 914
info@gcansembourg.eu
www.gcansembourg.eu
- A2 Colpach-Bas**
Rue d'Ell
L-8527 Colpach-Bas
T +352 621 781 694
patricia.dezwaef@tempora.lu
www.colpart.lu
- B2 Hollenfels**
Rue du Château
L-7435 Hollenfels
T +352 24 78 64 30
hollenfels@snj.lu
www.erliwen.snj.lu
- B3 Koerich**
Rue du Château
L-8385 Koerich
T +352 621 364 514
ksf@vo.lu · www.ksf.lu
- B2 Mersch**
Place St. Michel
L-7556 Mersch
T +352 32 50 23 1
info@mersch.lu
www.mersch.lu
- C3 Munsbach**
Rue du Parc
L-5366 Munsbach
T +352 35 01 13 1
info@schuttrange.lu
www.schuttrange.lu
- B2 Pettingen**
25, Rue du Château
L-7463 Pettingen
T +352 32 50 23 1
info@mersch.lu
www.mersch.lu
- B2 Schoenfels**
Rue du Village
L-7473 Schoenfels
T +352 32 50 23 1
info@mersch.lu
www.mersch.lu
- B2 Useldange**
2, Rue de l'Eglise
L-8706 Useldange
T +352 23 63 00 51 29
info@visitwellewesten.lu
www.visitwellewesten.lu



MUSEUMS & MORE

The history of Luxembourg is showcased in the museums of Guttland. How did a sawmill work in the past? How did it feel to have to work in the 200-year-old slate mine? How was schnapps distilled 100 years ago? In the house of the last potter of Nospelt, visitors can get an insight into the secrets of timehonoured craftsmanship. Original finds from the Stone Age to the Roman Age can be admired in the former vicarage in Nospelt. Police and fire department uniforms from all over the world are on display in Capellen and Senningen.

- B3 Capellen International Gendarmerie and Police Museum**
51, Route d'Arlon
L-8388 Capellen
T +352 691 70 47 40
riesarm@pt.lu
www.gendarmerie.lu
- B2 Everlange Speleology Museum**
Rue de la Halte
L-8715 Everlange
T +352 661 50 50 00
patklein1960@gmail.com
www.speleoteam.lu
- A1 Haut-Martelange Slate Museum**
L-8823 Haut-Martelange
T +352 23 64 01-41
info@ardoise.lu
www.ardoise.lu
- A3 Kahler Kinoler**
38, Rue Principale
L-8376 Kahler
kinoler@garnich.lu
www.kinoler.lu
- B3 Kehlen Distillery Museum**
13, Rue d'Olm
L-8281 Kehlen
T +352 621 76 84 52
info@brennerei.lu
- B3 Koerich Water Works (SES)**
Fockemillen
L-8386 Koerich
T +352 3991 96 1
info@syneausud.lu
www.ses-eau.lu
- B2 Mersch Exhibition of the Castle of Mersch**
Place St. Michel
L-7556 Mersch
T +352 32 50 23 1
info@mersch.lu
www.mersch.lu
- A2 Niederpallen Jhangelis Gare - Old Railway Station**
Rue de Noerdange
L-8545 Niederpallen
T +352 23 62 04 28
kropemann@redange.lu
www.redange.lu
- A2 Noerdange Närdener Gare - Old Railway Station Museum**
3, Op der Gare
L-8551 Noerdange
T +352 691 51 03 70
info@dmillen.lu
www.dmillen.lu
- B3 Nospelt Pottery Museum**
3, Rue des Potiers
L-8391 Nospelt
T +352 30 03 07
sinospelt@gmail.com
www.sinospelt.jimdo.com
- B3 Nospelt Archaeological Museum**
2, Rue d'Olm
L-8392 Nospelt
T +352 26 30 27 73
gka@gka.lu
www.gka.lu
- B1 Reimberg Michel Lucius - Museum**
L-8414 Reimberg
T +352 26 62 99 40
jruppert@preizerdau.lu
www.museemichellucius.lu
- A1 Rindschleiden Thillenvogtei - Rural Museum**
Maison 3
L-8831 Rindschleiden
T +352 691 11 90 90
thillenvogtei@gmail.com
www.thillenvogtei.lu
- B1 Roost / Bissen Vitarium - Dairy Factory Discovery Centre**
Am Seif
L-7759 Bissen
T +352 25 02 80 222
info@vitarium.lu
www.vitarium.lu
- C3 Senningen Fire Brigade Exhibition**
38, Rue du Château
L-6961 Senningen
T +352 691 50 78 14
aps-s@pt.lu



HISTORICAL SITES

The Guttland region is home to many prehistoric and ancient sites as well as Gallo-Roman sites, such as the Roman villa in Mersch, the thermal baths in Mamer or the Villa Rustica in Goebange. If you are fascinated by the Stone Age, you can take a look at the Neolithic village in Blaschette or at the impressive menhir in Mersch.

- C2 Blaschette Neolithic Village**
Rue de Wormeldange
L-7390 Blaschette
T +352 33 72 68 1
lorenzweiler@lorenzweiler.lu
www.lorenzweiler.lu
- B3 Capellen Gallo-Roman Brick Factory**
Route d'Arlon Capellen
L-8310 Capellen
T +352 26 30 27 73
gka@gka.lu · www.gka.lu
- B3 Goebange Roman Villa "A Miecher"**
Rue de Goebange
L-8383 Goebange
T +352 26 30 27 73
gka@gka.lu · www.gka.lu
- B3 Helmsange / Walferdange "Raschpétzer"**
Underground Aqueduct
Route CR 125
Helmsange / Stafelter
T +352 33 01 44 1
info@sitwalfer.lu
www.sitwalfer.lu
- B2 Helmsange / Walferdange Roman Villa**
Cité Princesse Amélie / Rue Jean Schaack
L-7262 Helmsange / Walferdange
T +352 33 01 44 1
info@sitwalfer.lu
www.sitwalfer.lu
- B3 Mamer Thermae**
Tossenbergl
L-8252 Mamer
T +352 621 50 34 30
rietsch@pt.lu
www.mamer-geschicht.lu
- B2 Mersch Roman Villa**
Rue des Romains
L-7565 Mersch
T +352 32 50 23 1
info@cni.etat.lu
www.mersch.lu
- C3 Neuhaeusgen Native Village**
1, Rue Principale
L-5290 Neihaischen
T +352 35 76 45
info@nativevillage.lu
www.nativevillage.lu
- A2 Reckange/Mersch Menhir - Standing Stone**
Rue Enelter
L-7596 Reckange
T +352 32 50 23 1
info@mersch.lu
www.mersch.lu
- C3 Sandweiler German Cemetery**
Scheidhof
L-5280 Sandweiler
T +352 35 50 07
info@sandweiler.lu
www.sandweiler.lu
- B3 Steinsel Roman Villa**
Park Leir Steinsel
T +352 33 21 39 1
commune@steinsel.lu
www.steinsel.lu
- B1 Vichten Roman Mosaic**
1, Rue de l'Eglise
L-9188 Vichten
T +352 621 40 95 22
secretariat@vichten.lu
www.vichten.lu
- C4 Weiler-la-Tour Tower**
Rue des Forges / Rue du Château
L-5770 Weiler-la-Tour
T +352 26 61 71-1
info@weiler-la-tour.lu
www.weiler-la-tour.lu



NATURE

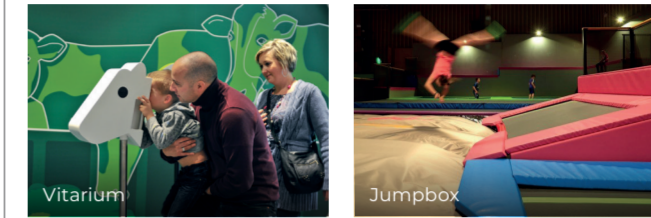
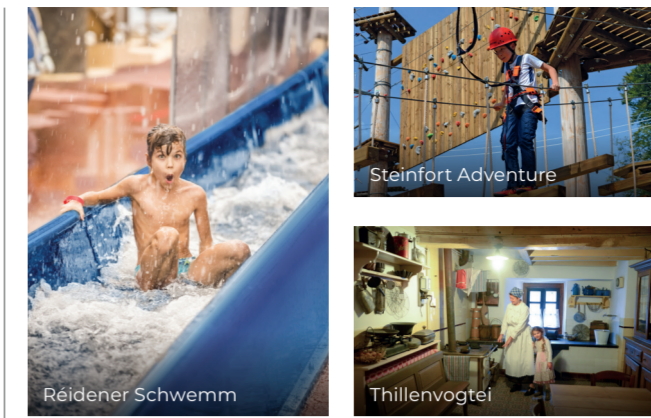
The Guttland region has it all: from fine castle parks with statues from Greek and Roman mythology or remote nature reserves that offer a protected habitat for rare species. Discover the beauty of nature.

- B2 Calmus Gaart um Titzberg**
1a, Titzberg
L-8525 Calmus
T +352 621 66 07 00
a.block@pt.lu
- A2 Colpach-Bas / Grendel Marais de Grendel Nature Reserve**
T +352 26 90 81 27
c.schiltz@luxnatur.lu
www.naturemwelt.lu
- C3 Munsbach Rose Garden**
Rue du Parc
L-5374 Munsbach
T +352 621 422 444
rousefrenn@gmail.com
www.rousefrenn.lu
- C3 Niederanven Aarnesch Nature Reserve**
77, Rue Andethana
L-6970 Niederanven
T +352 34 11 34 1
secretariat@niederanven.lu
www.niederanven.lu
- B2 Pettingen Pëttenerbësch Nature Reserve**
T +352 40 22 01 1
www.environment.public.lu
- B2 Schoenfels Mamerleeren - Caves**
T +352 661 50 50 00
patklein1960@gmail.com
www.speleoteam.lu
- A3 Steinfort Schwaarzenhaff Nature Reserve**
1, Rue Collart
L-8414 Steinfort
T +352 26 39 34 08
mirador@anf.etat.lu
www.nature.lu
- C3 Uebersyren Schlammwäss Nature Reserve**
T +352 621 293 695
j.p.schmitz@naturemwelt.lu
www.birdringingstation-schlammwäss.com



CULTURAL CENTRES

- A2 Beckerich D'Millen**
103, Huewelerstrooss
L-8521 Beckerich
T +352 691 51 03 70
info@dmillen.lu
www.dmillen.lu
- B3 Mamer Kinneksbond Centre Culturel Mamer**
42, Route d'Arlon
L-8210 Mamer
T +352 26 39 51 00
info@kinneksbond.lu
www.kinneksbond.lu
- B2 Mersch Mierscher Kulturhaus**
53, Rue G.D. Charlotte
L-7520 Mersch
T +352 26 61 71-1
info@kulturhaus.lu
www.kulturhaus.lu
- B2 Mersch National Literature Archive**
2, Rue Emmanuel Servais
L-7565 Mersch
T +352 32 69 55 1
cni@cni.etat.lu
www.cni.public.lu
- A3 Steinfort Al Schmelz**
Rue Collart
L-8414 Steinfort
T +352 39 93 13 1
www.steinfort.lu
- C3 Niederanven Kulturhaus Niederanven**
145, Route de Trèves
L-6940 Niederanven
T +352 26 34 73 1
info@khn.lu
www.khn.lu
- B2 Useldange Manukultura**
1, Am Millenhaff
L-8706 Useldange
T +352 23 63 00 51 29
manukultura@useldeng.lu
ManukulturaUseldange
- B3 Walferdange CAW**
5-7, Route de Diekirch
L-7220 Walferdange
T +352 33 01 44 1
caw@walfer.lu
www.caw-walfer.lu



HITS FOR KIDS

- C4 Contern Jumpbox - Indoor Trampoline Park**
8, Rue de l'Etang
L-5326 Contern
T +352 28 22 76 1
info@jumpbox.lu
www.jumpbox.lu
- B3 Lorentzweiler Pidal**
Rue des Prés
L-7246 Helmsange
T +352 33 91 72 1
info@pidal.lu
www.pidal.lu
- B2 Mersch Aquatic Centre Krouneberg**
14, Rue de la Piscine
L-7572 Mersch
T +352 32 88 23-1
info@krouneberg.lu
www.krouneberg.lu
- C3 Niederanven Syrdall Schwemm**
3, Rue Routscheed
L-6939 Niederanven
T +352 34 93 63 1
kontakt@syrdallschwemm.lu
www.syrdallschwemm.lu
- A2 Redange-sur-Attert Reidener Schwemm**
28, Rue de la Piscine
L-8508 Redange
T +352 23 62 00 32-1
info@reidener-schwemm.lu
www.reidener-schwemm.lu
- B1 Rindschleiden Thillenvogtei Rural Museum**
Maison 3
L-8831 Rindschleiden
T +352 691 11 90 90
thillenvogtei@gmail.com
www.thillenvogtei.lu
- B1 Roost / Bissen Vitarium - Dairy Factory Discovery Centre**
Am Seif
L-7759 Bissen
T +352 25 02 80 222
info@vitarium.lu
www.vitarium.lu
- A3 Steinfort Steinfort Adventure**
Rue du Schwarzhof
L-8452 Steinfort
T +352 27 39 53 00
info@steinfort-adventure.lu
www.steinfort-adventure.lu



TOURIST OFFICES

- B3 Koerich Koerich Castle**
Rue du Château
L-8385 Koerich
T +352 28 22 78 62
(During the summer season)
- B2 Mersch Tourist Info**
Place St. Michel
L-7556 Mersch
T +352 28 22 78 62
(During the summer season)
- A3 Steinfort Nature Centre**
1, Rue Collart
L-8414 Steinfort
T +352 26 39 34 08
mirador@anf.etat.lu
www.nature.lu
- B2 Useldange TouristInfo Wëlle Westen**
1, am Millenhaff
L-8706 Useldange
T +352 23 63 00 51 28
info@visitwellewesten.lu
www.visitwellewesten.lu

GEOPORTAIL
This website gives you all kinds of information on hiking trails, mountain bike tracks and bike paths, such as elevation profiles of the selected tracks. It also offers the possibility to download the tracks under GPX or KML format for a further utilization with portable GPS device.
tourisme.geoportail.lu

TOURISM FOR ALL
The label "EureWelcome" is awarded to particularly accessible tourist infrastructures. The website www.eurewelcome.lu gives detailed information on all the sites with the EureWelcome label.

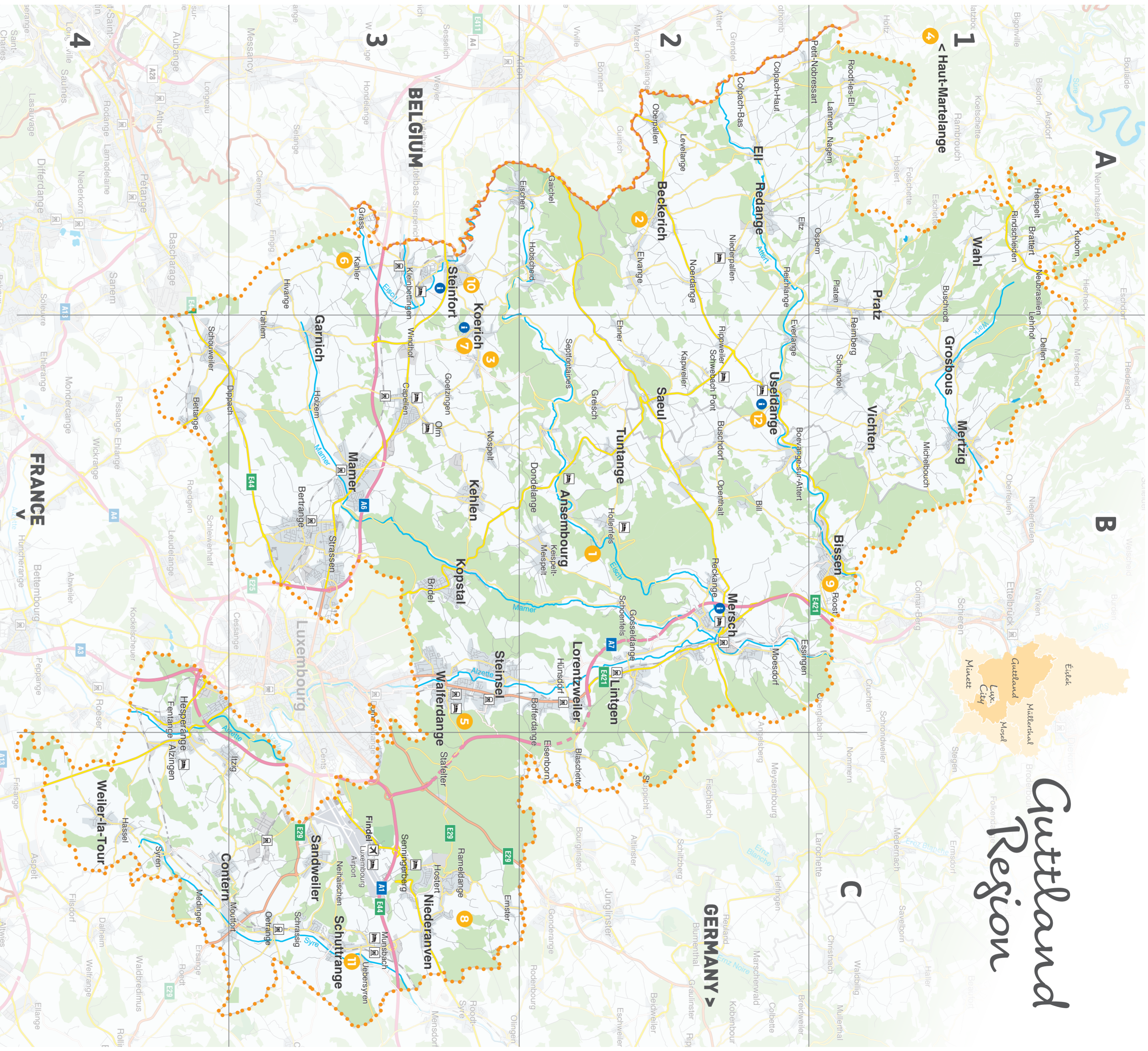


USEFUL HINTS

- Emergency call**
112
- Luxembourg for Tourism**
T +352 42 82 82-1
info@visitluxembourg.com
www.visitluxembourg.com
- Public Transportation (free of charge)**
T +352 2465 2465
www.mobiliteit.lu
- Regional Tourism Office Central/Western Luxembourg**
B.P. 150 L-7502 Mersch
T +352 28 22 78 62
info@visitguttland.lu
www.visitguttland.lu
- Layout**
cropmark
- Impression**
Z-CARD®, Belgium © ORTCO
The information contained on this Z-CARD® is provided without obligation.
- Cover credits**
Visit Guttland
- Photo credits**
CIGL
D'Millen a.s.b.l.
Uli Fielitz
Fotoatelier Op Der Schock
Commune de Garnich
CKA
Guy Krier
LFT - Alfonso Salgueiro
Sandra Meyer
Gemeng Miersch - Oli Frisch
Musée de l'Ardoise
Jeannot Weber
Caroline Risch-Roemen
Jim Schmitz
Reidener Schwemm
Wolfgang Staudt
Commune de Steinfort
Eric Threinen
Visit Guttland
Vitarium
Syndicat Walferdange
Christof Weber
Jeannot Weber
- Facebook.com/visitguttland**
@instagram.com/visitguttland



Guttland Region



	Railway / Chemin de fer / Eisenbahn
	Train station / Gare / Bahnhof
	Touristinfo
	Accommodation / Hébergement / Unterkunft
	Street / Route / Straße
	Motorway / Autoroute / Autobahn
	Watercourse / Cours d'eau / Wasserlauf
	Forest / Forêt / Wald



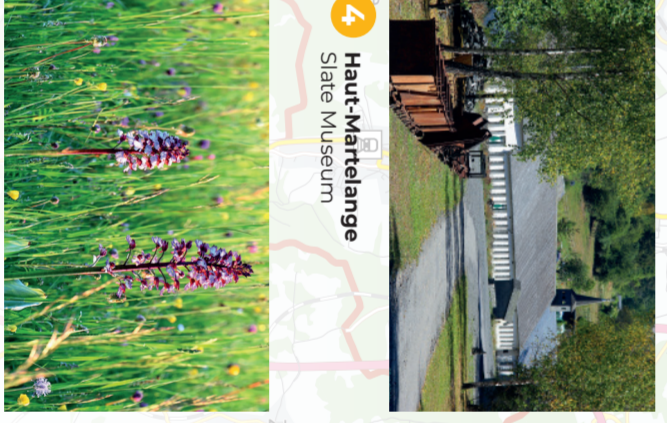
1 Ansembourg
Castle & Park



2 Beckerich
DMILLen



3 Cooblange
AMIECHER
Roman Villa



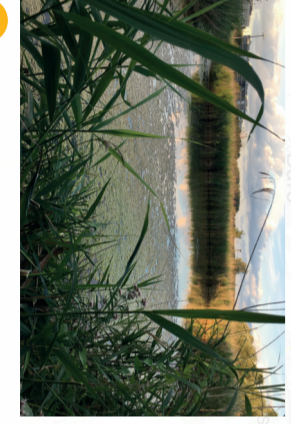
4 Haut-Martelange
Slate Museum



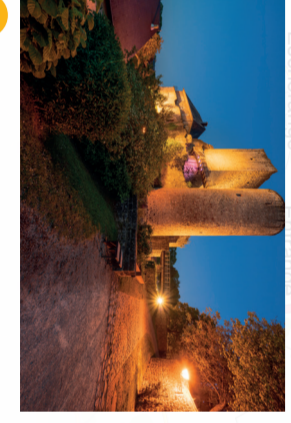
5 Hepsange / Waiferdange
PASCHEPÉTZER
Underground Aqueduct



6 Kahler
KINOLÉER
Movie Theatre



7 Koerich
Castle



8 Niederaaven
AARNESCHT
Nature Reserve

9 Roost / Bissen
VITARIUM
Dairy Factory Discovery Centre

10 Steinfort
STEINFORT ADVENTURE

11 Uebersyren
SCHLAMMVISS
Nature Reserve

12 Useldange
Castle

